

SILICON SAVANNAH  
LANDMARK

# KAVALI

## RESIDENCES

---

Master Marketing Catalog  
Konza Technopolis, Parcel RS 003.



# KONZA – THE STRATEGIC VISION

## DESIGNED FOR GENERATIONS

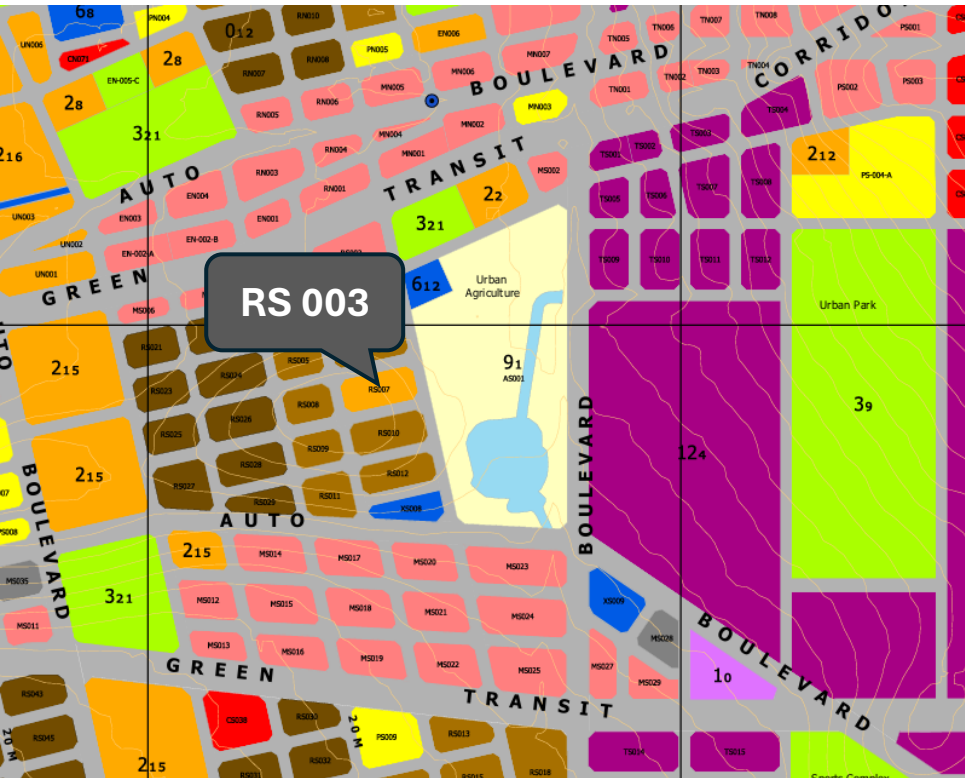
Kavali Residences stands as the inaugural residential anchor in Africa's Silicon Savannah. A \$1.2B government project designed for 200,000 tech pioneers.

## FIRST-MOVER ADVANTAGE

Securing your legacy in the core Phase 1 zone of Konza Technopolis, where demand for high-spec housing is projected to outpace supply.



# SMART INTERSECTION



## THE GEOGRAPHIC HEART

Located on Parcel RS 003, Kavali sits at the geographic center of the Konza Central Business District (CBD). Residents enjoy a high-connectivity lifestyle with the city at their doorstep.



**SGR Station:** 5 mins commute.



**Green Belt:** Proximity to central parks.



**Knowledge Hubs:** Near University nodes.

# WELLNESS SANCTUARY

Curated amenities designed to elevate daily living. Experience a balance between professional ambition and absolute domestic serenity.



## THE POOL

Private pool with spacious lounge area.



## WELLNESS HUB

Technogym-spec fitness and aerobics centers.





# INNOVATE & CONNECT



## THE FOUNDRY

A professional co-working ecosystem for tech-pioneers. Seamlessly transition from your home to a high-spec working environment.

-  Gigabit Fiber Access.
-  Private Working areas.

# THE KONZA STANDARD



## GIGABIT FIBER

Direct backbone access for frictionless connectivity.



## VACUUM WASTE

Integrated smart subterranean automated city collection.



## RESILIENT GRID

24/7 smart-metered power with redundant city-wide systems.



## CITY SAFETY

Integrated and enhanced security and safe city elements.

*"World-class standards, built-in."*

# INNOVATE & CONNECT

TYOLOGY	MARKETING NAME	AREA (SQM)	SIGNATURE FEATURE
1 Bedroom	The Smart Studio	55.0	Plug-and-Play Hub
2 Bedroom	The Executive Suite	93.0	Social Axis Hosting
3 Bedroom A	The Savannah Loft	120.3	Linear Spatial Flow
3 Bedroom B	The Panorama Suite	137.7	Triple-Aspect Vista
4 Bedroom	The Premium Residence	155.0	Generational Privacy Wing
5 Bedroom	The Zenith Penthouse	186.0	Signature Duplex Volume

*\*All residences include premium flooring and high-volume ceilings.*

STRUCTURAL INNOVATION



# ARCHITECTURAL SOUL

## PLANNED FOR EXCELED LIVING

Kavali Residences was planned by a top-tier team with a focus on convenience and safety.

- Gated Compound with 24/7 smart security.
- Designated Resident and Guest Parking.
- Sophisticated Building Lobby and High-Speed Elevators.
- Landscaped Kids Playgrounds and social decks.



**EDGE CERTIFIED:** We prioritize low-carbon luxury through high-performance glazing, water management, and sustainable materials.

# URBAN SELECTION I



**THE SMART STUDIO**  
Urban Efficiency. Smart  
Innovation.



**THE EXECUTIVE SUITE**  
Sophisticated Living. Urban  
Comfort.



**THE SAVANNAH LOFT**  
Modern Tech. Golden  
Horizons.

# URBAN SELECTION II



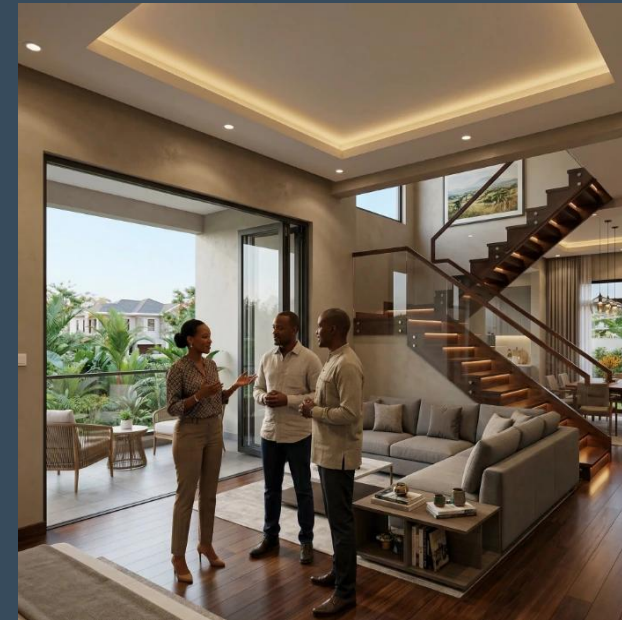
## THE PANORAMA SUITE

Triple Aspect. Unrivaled Vistas.



## THE PREMIUM WING

Expansive Volume. Family Legacy.



## THE ZENITH PENTHOUSE

Pinnacle of Prestige.

# THE PATH FORWARD

**Q4 2025**

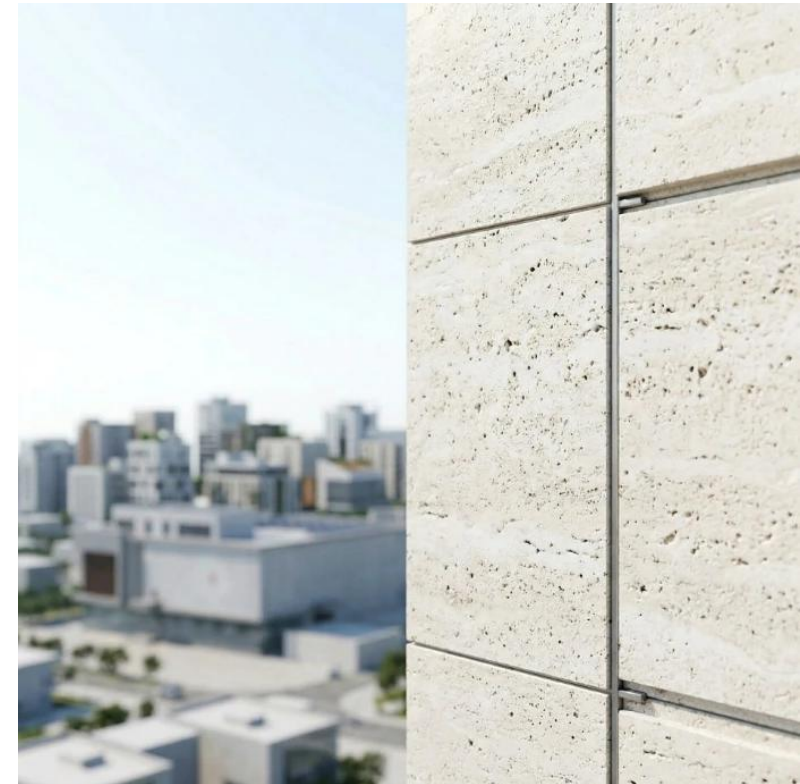
Structure Complete

**Q3 2026**

Handover Begins

## THE FUTURE

Following the completion of Phase 1, we will commence Phases 2 and 3 to create a landmark community compound of over 600 connected residential units and integrated lifestyle amenities.



# CONTACT US

## SECURE YOUR LEGACY

Book a private discovery session or visit our Konza site.

### WEBSITE

[www.kavali.co.ke](http://www.kavali.co.ke)

### SALES

[sales@kavali.co.ke](mailto:sales@kavali.co.ke)

### NAIROBI OFFICE

Watermark Business Park, Ndege  
Road,  
Delta Block, Suit 3, Karen, Nairobi ,  
Nairobi

### SALES SUPPORT

+254 7XX XXX XXX



### THE DEVELOPER

Kavali Residences is a premier project by SD-East Africa Shalom Development and Infrastructure Ltd, part of the Shalom Development Group (Cyprus).